

BELL+HOWELL
instaprint
Mobile Photo Printer



User Guide



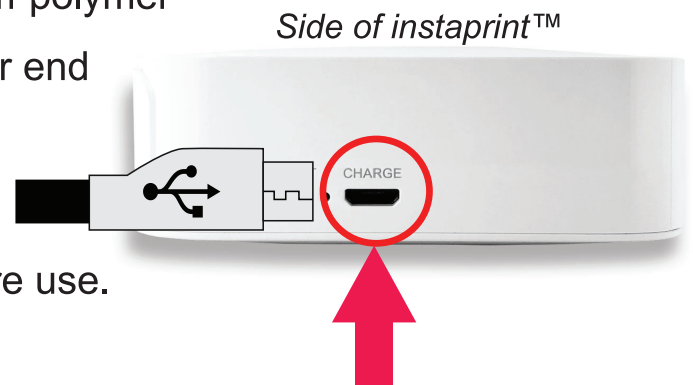
Introduction

Congratulations on the purchase of your BELL+HOWELL instaprint™ mobile photo printer! Printing high-quality super-sharp photos is made fast and easy utilizing the patented 4PASS printing system. Visit our website at www.elitebrands.com for the latest news and updates on our products.

Recharging the Battery

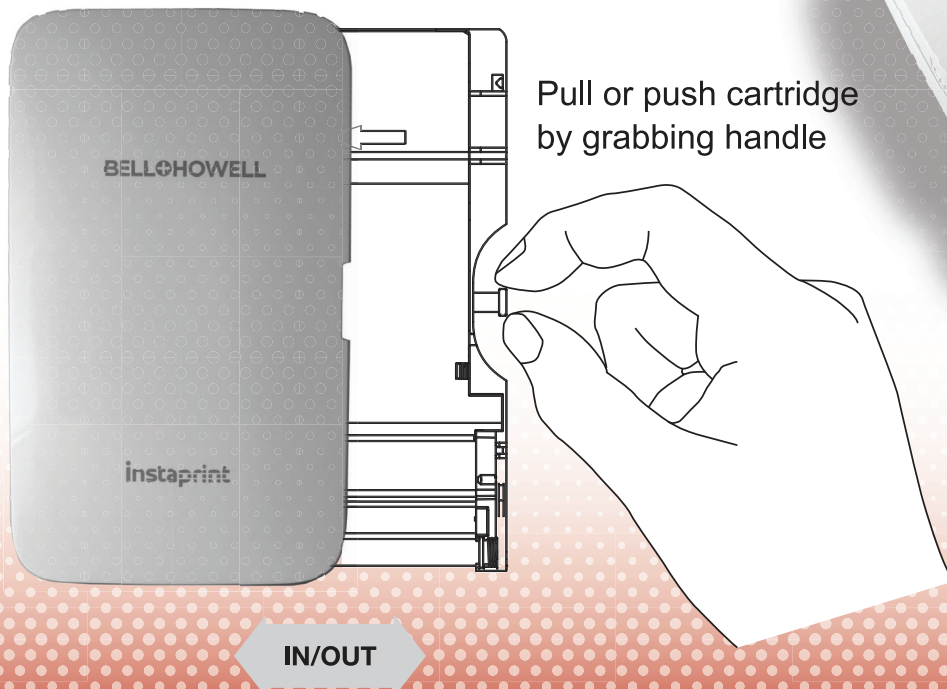
Your printer contains a non-removable lithium-polymer rechargeable battery. Simply plug the smaller end of the included USB plug into the printer port and the larger end into a USB charger.

Charge your printer for at least 2 hours before use.



Paper+Ink Cartridge

Your printer includes a 10-paper cartridge. Insert the paper+ink cartridge as shown. The cartridge can only be inserted in one way.



Buttons and Active Status



Side of instaprint™

○ Power button: Power ON / Power OFF (hold for 2 sec.)

White LED Solid: Power ON

White LED Blinking: Printing in progress

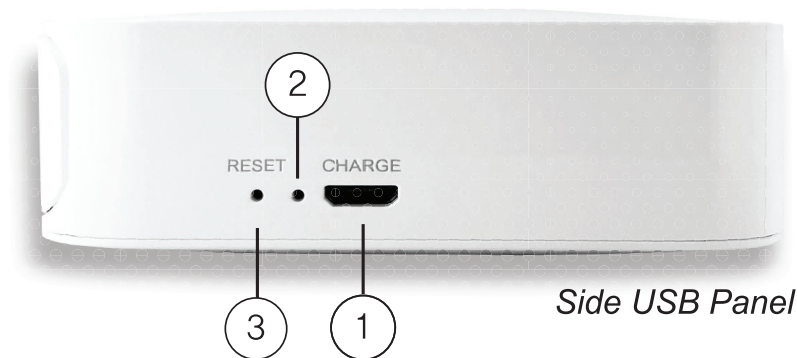
⊖○ Pink LED Blinking: Firmware upgrade in progress

Red LED Blinking: No paper+ink cartridge

White LED Blinking: Camera is cooling down

✕○ Blue LED Blinking: Bluetooth connecting

Green LED Solid: Bluetooth complete



Side USB Panel

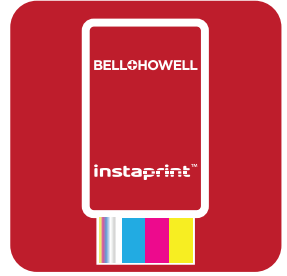
① USB Port: Plug in to recharge battery

② Red LED: Charging in progress
Green LED: Charging complete

③ Reset button: Press with a thin, pointy object if your printer becomes unresponsive

Smartphone App Installation

- (1) Go to the Google Play Store or iOS App Store on your smartphone.
- (2) Search for “BELL+HOWELL Instaprint”.
- (3) Download and launch the app once installation is complete.



App Icon

Bluetooth Connection

- (1) Enable Bluetooth on your smartphone.
- (2) Power your printer on.
- (3) Go to the Bluetooth settings on your smartphone and select “INSTAPRINT-XXXX” ('XXXX' represent digits based on the serial number and varies for each camera).
- (4) Once the Bluetooth connection is established, the Bluetooth LED on your camera will illuminate in green.



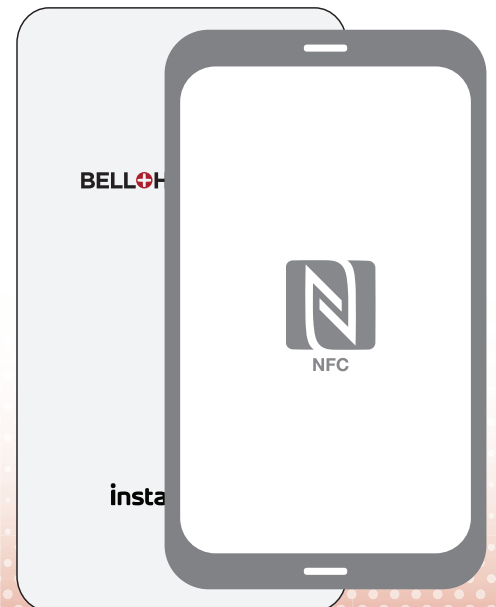
Side of instaprint™

NFC Connection (Android Devices Only)

- (1) Enable NFC on your smartphone.
- (2) Power your printer on.
- (3) Tap or place your smartphone on top of the printer.

The Google Play Store will automatically launch the instaprint app installation page. Install the app to proceed.

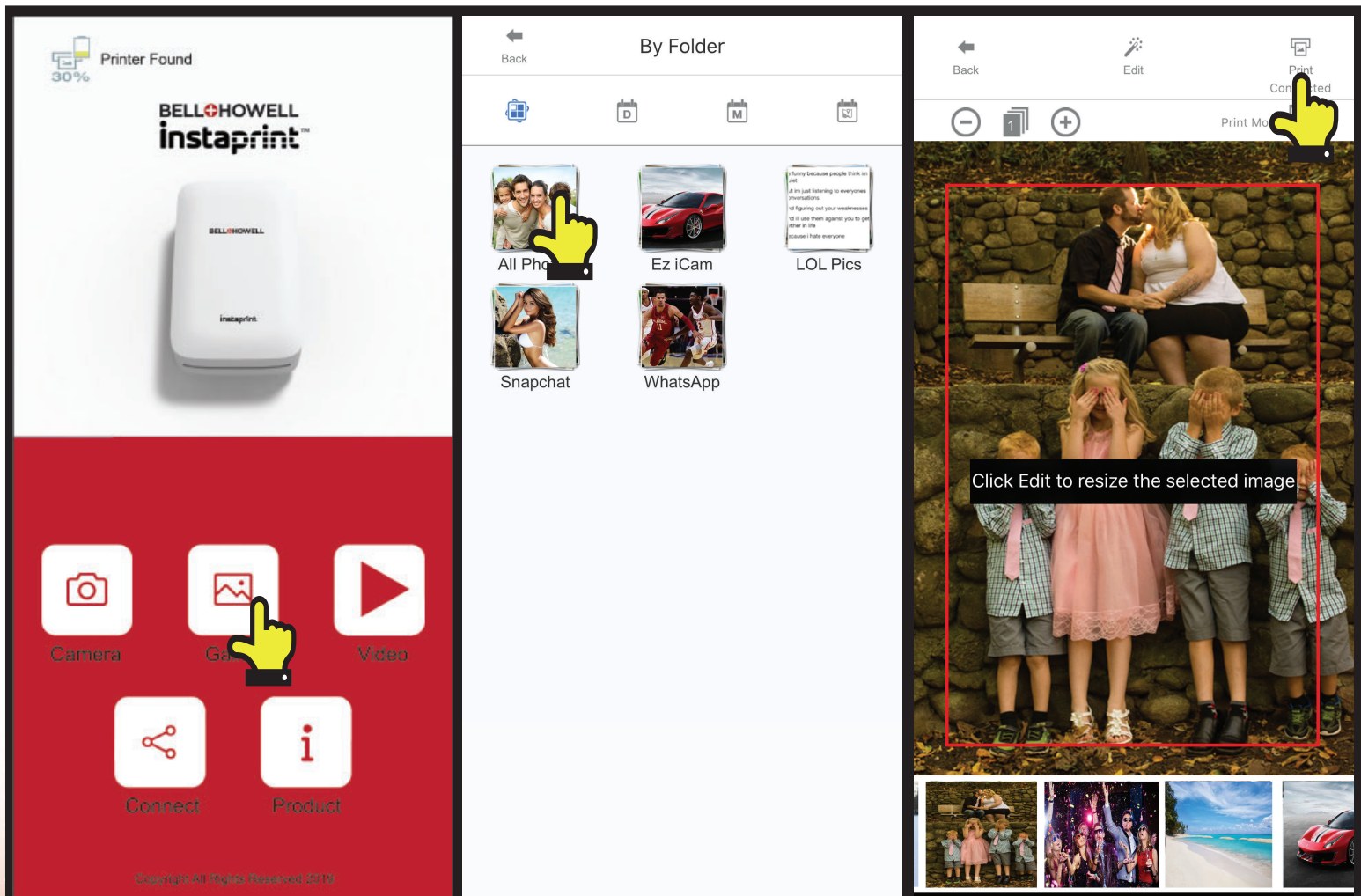
- (4) If the instaprint app is already installed, then tapping or placing your smartphone on top of the printer will automatically launch the app.



Printing a Photo From Your Smartphone

- (1) Ensure that your printer and smartphone are connected.
 - (2) Launch the “BELL+HOWELL Instaprint” app from your smartphone.
 - (3) On the app, select the Gallery option.
 - (4) Select a photo from one of the folders on your smartphone photo library.
 - (5) Once you select a photo, you can edit it by tapping the Edit button.
 - (6) Once you are ready to print, tap the Print button in the top right corner.
- ** Do not exit or close the app until your photo has completed the printing process. Doing so may cancel the print job and not complete your printing job.


Visualization of Bell+Howell instaprint™ smartphone app



Notes

- * The photo paper will retract in and out 4 times (Yellow, Magenta, Cyan, Laminate Overcoat). For the best image quality, do not touch the paper until the printing process is complete.
- * Do not pull the paper out by force until printing is completed.
- * Do not place any objects in front of the paper exit slot.
- * Be sure to check the app store for the latest app version and firmware versions available for download.
- * The printer has a built-in, non-removable battery. Be sure to charge it before use.
- * Handle with care during charging to prevent electric shock.
- * Do not disassemble or attempt to repair. Doing so may void warranty.
- * Avoid extremely high or low temperatures. Operating temperature should stay between 32~104 degrees F.
- * A higher resolution photo will produce a higher print photo quality. The minimum recommended image pixel size for printing is 1280x2448 pixels.

Troubleshooting

Symptom	Cause / Solution
Paper jam	Power off and on again. Paper will be automatically ejected. If not, replace the old cartridge with a new cartridge.
Image quality is unclear or blurry	Original image file may already be unclear or blurry.
	The minimum recommended image pixel size is 1280x2448 pixels.
Printer is not responding.	Reset the printer with a pointy object. 

This device complies with FCC SAR requirement. This device complies with part 15 of the FCC Rules. Operation is subject to the following two conditions:

- (1) This device may not cause harmful interference, and
- (2) This device must accept any interference received, including interference that may cause undesired operation.

Caution: Any changes or modifications to the equipment not expressly approved by the party responsible for compliance could void user's authority to operate this equipment.

BELL+HOWELL® instaprint™ Technical Specifications

General	Printing Technology		4PASS Technology (Dye Diffusion Thermal Transfer)
	User Interface	LED	Printer Status, Bluetooth Status, Battery Status
		Key / Button	Power, Reset
	Connectivity	Wireless Connectivity	Bluetooth
	Power Consumption	Standard Operation	Max 13W
		Auto Power Off	2 minutes
	Internal Battery	Capacity	Single lithium 620mAh, 4.588Wh
		Charging Method	Rechargeable
		Max Printing Sheets on Full Charge	20 Sheets
		Time to Full Charge	120 minutes
	Acoustic Noise	Printing	Less than 60 dB
	Dimensions (W x D x H)	Set(mm)	138.2 x 80.0 x 27.1
Set Packing		156 x 105 x 51	
Gross Weight	Full Set with Packaging	350g	
	Boot Time	14 sec	
Printing	Print Speed		60 seconds for first print after first boot-up, 50 seconds afterwards
	Resolution		291 dpi
	Smartphone OS Support	Android	Android OS version 6.0 and later
Apple iOS		iOS version 10.0 and later	
Media Handling	Input Capacity	Standard	10 sheet cartridge @ 220g/m ²
	Output Capacity	Standard	1 Sheet @ 220g/m ²
	Media Size	Standard	54 x 97mm
APP	Application	Smartphone App	Bell+Howell Instaprint
	Photo Formats Supported		JPEG, PNG
	Capture, Retrieve, Print and Share Photos	Shoot through	Smartphone Camera Feature
		Smartphone Gallery	Yes
		Smartphone Camera	Yes
		Cloud Drives	Yes
		Social Media App	Yes
	Edit Photos	Crop, Rotation, resize etc.	Yes
		Insert Text, Sticker, etc.	Yes
		Adjust color, sharpness etc.	Color, Sharpness, Brightness
		Filter and Frame	Yes
ID photo / Business Card		Yes	
	Collage	Yes	
Firmware Upgrade	by App Update	Yes	
Environment	Recommended	10~30 degree C / 5~70% RH	
	Storing Conditions	-30~70 degree C	

©BHH LLC 2019

DISTRIBUTED UNDER LICENSE OF BHH LLC BY ELITE BRANDS INC.

Elite Brands Inc. 40 Wall Street, 61st Floor

New York, NY 10005 USA • (800) 441-1100 • www.elitebrands.com

MADE IN KOREA